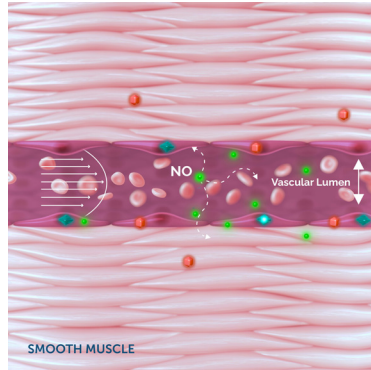
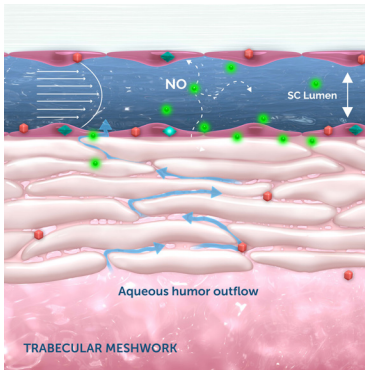


PARALLELS IN REGULATION: IOP VS BLOOD PRESSURE

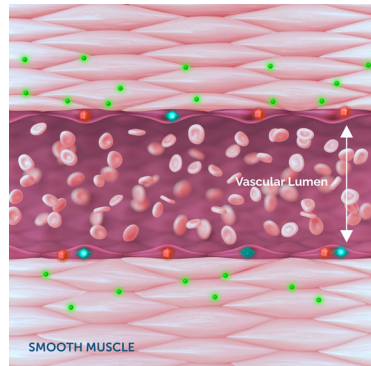
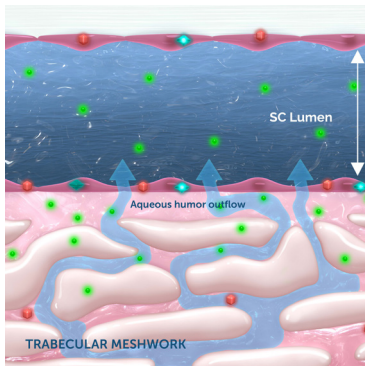
INTRAOCCULAR PRESSURE (IOP) AND BLOOD PRESSURE share a multitude of physiological features in common. Clinical and scientific studies indicate that nitric oxide signaling is critical to the dynamic regulation of both processes.¹⁻⁴

● NITRIC OXIDE
 ◆ INACTIVE eNOS
 ◆ ACTIVE eNOS
 ◆ ENDOTHELIN-1



ELEVATED IOP VS VASCULAR HYPERTENSION

When IOP is elevated, the trabecular meshwork (TM) stretches and the Schlemm's canal (SC) narrows, thus increasing shear stress in the SC. This mirrors the increased shear stress in vascular endothelial cells when blood vessels narrow.^{3,4}



NORMAL IOP VS VASCULAR RELAXATION

The endothelial cells respond to shear stress by activating endothelial nitric oxide synthase, leading to increased nitric oxide production.

Nitric oxide then diffuses rapidly to relax cells, either in the TM or vascular smooth muscle, to increase fluid flow.³⁻⁴



“The physiology of IOP and systemic blood pressure regulation are closely related.”

—Dan Stamer, PhD



Discover more about the 250-year history of nitric oxide advancement and innovation

Go explore at [GlaucomaHorizons.com](https://www.GlaucomaHorizons.com)

REFERENCES:

1. Aliancy J, Stamer WD, Wirostko B. A review of nitric oxide for the treatment of glaucomatous disease. *Ophthalmol Ther*. 2017;6(2):221-232.
2. Stamer WD, Lei Y, Boussommier-Calleja A, Overby DR, Ethier CR. eNOS, a pressure-dependent regulator of intraocular pressure. *Invest Ophthalmol Vis Sci*. 2011;52(13):9438-9444.
3. Reina-Torres E, De Ieso ML, Pasquale LR, et al. The vital role for nitric oxide in intraocular pressure homeostasis. *Prog Retin Eye Res*. 2021;83:100922.
4. Ashpole NE, Overby DR, Ethier CR, Stamer WD. Shear stress-triggered nitric oxide release from Schlemm's canal cells. *Invest Ophthalmol Vis Sci*. 2014;55(12):8067-8076.